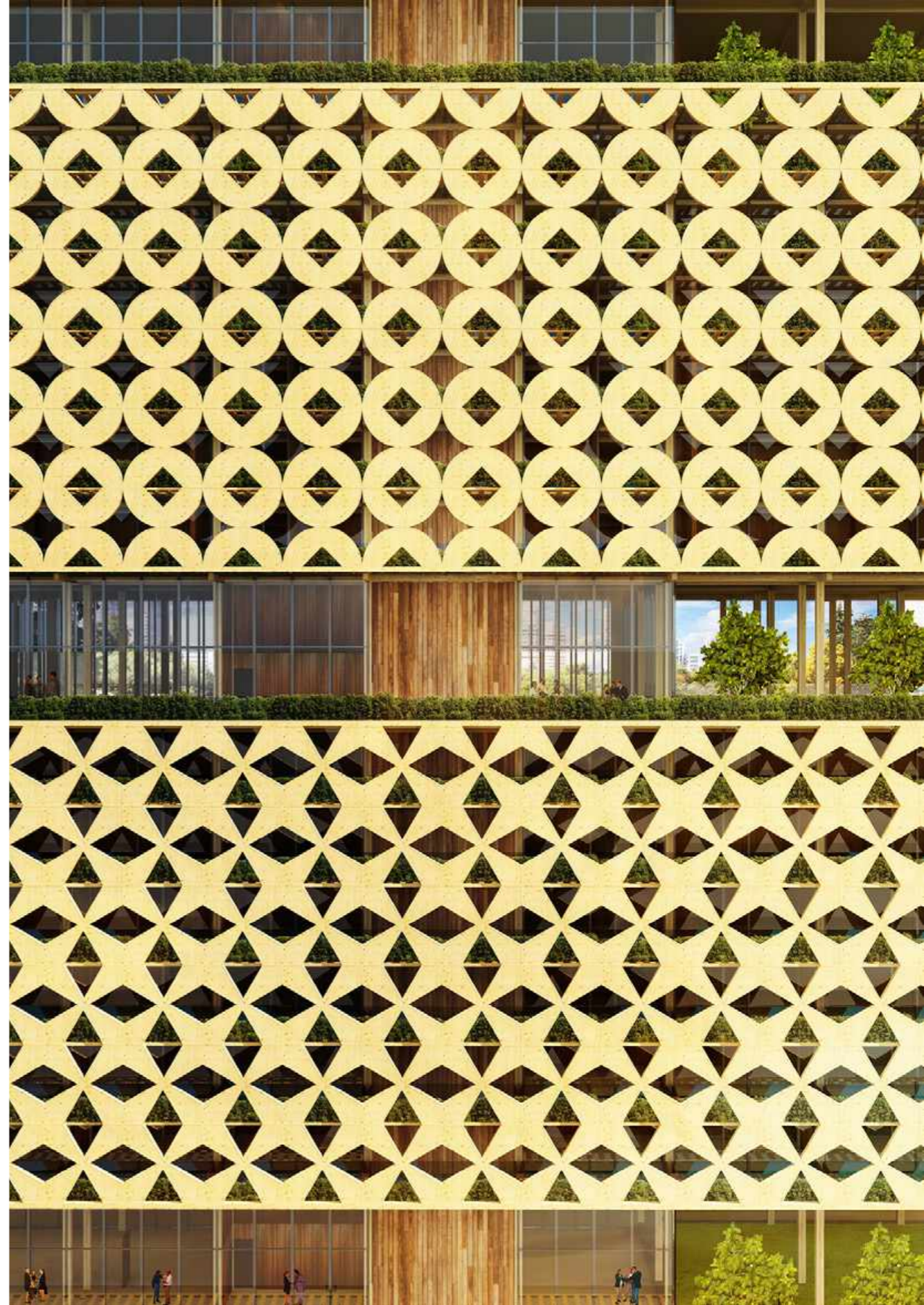




TRANSFORMATION THAT MATTERS IN THE CITY OF LAGOS (NIGERIA)



EXPERIMENTAL WOODEN TOWER



AFRICAN CULTURAL INFLUENCE

WELCOME TO LAGOS

(In the heart of Africa, Hausa and Yoruba Culture)

Lagos is the most populated city in Africa and a big deal for architects. City consists of 16 million inhabitants.

Situated in the heart of Ikoyi, the most popular and the richest residential site of Nigeria, Lagos's tower is the unique wooden structure which is designed to be a smart and sustainable building.

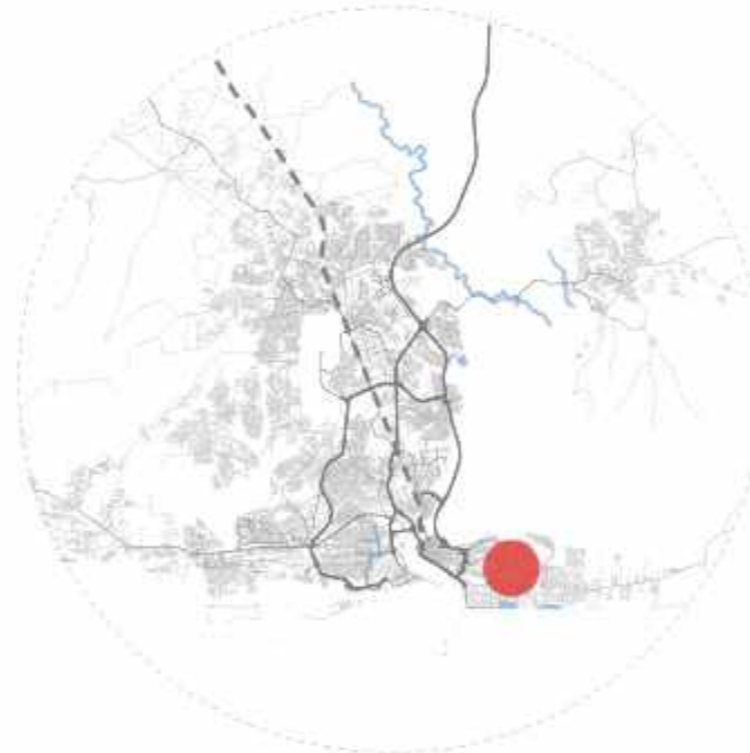
It gives 360-degree panoramic views from Lagos Island and the lagoon beyond, to downtown Victoria Island, Lekki Island and across the Atlantic Ocean.



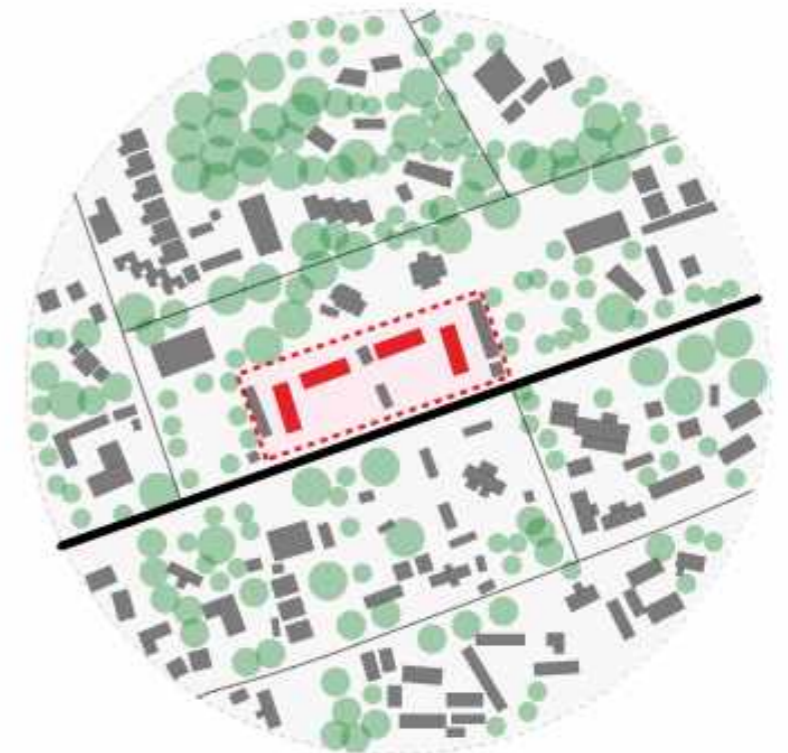
Nigeria (182.20 million inhts)



Ikoyi, Lagos (1 km perimeter)

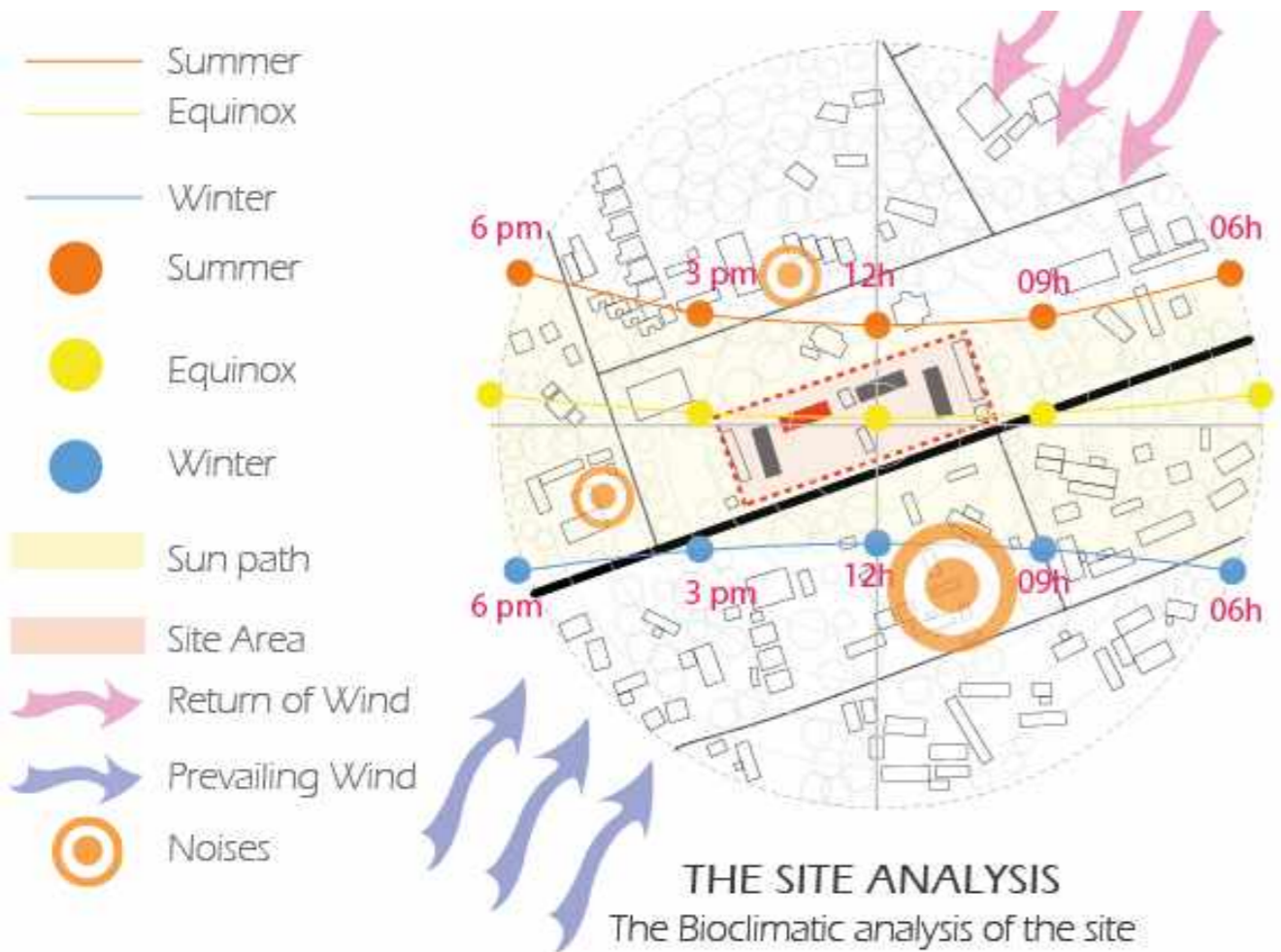


Lagos, Nigeria (21 million inhts)

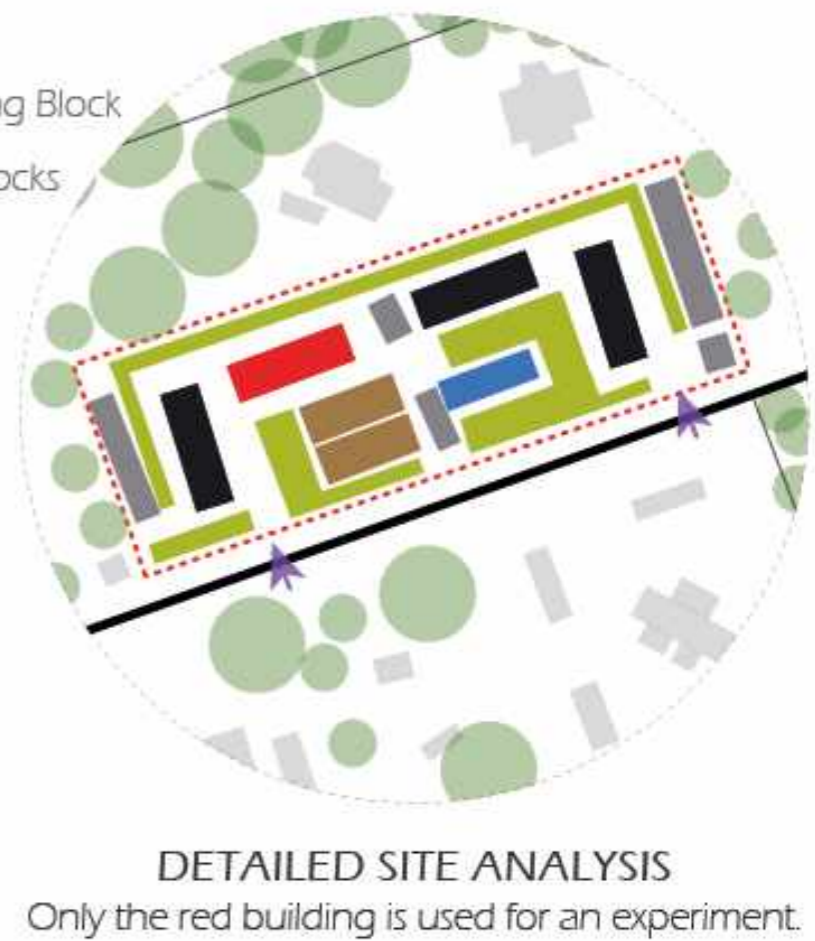


Abebe Court, Ikoyi (300m perimeter)

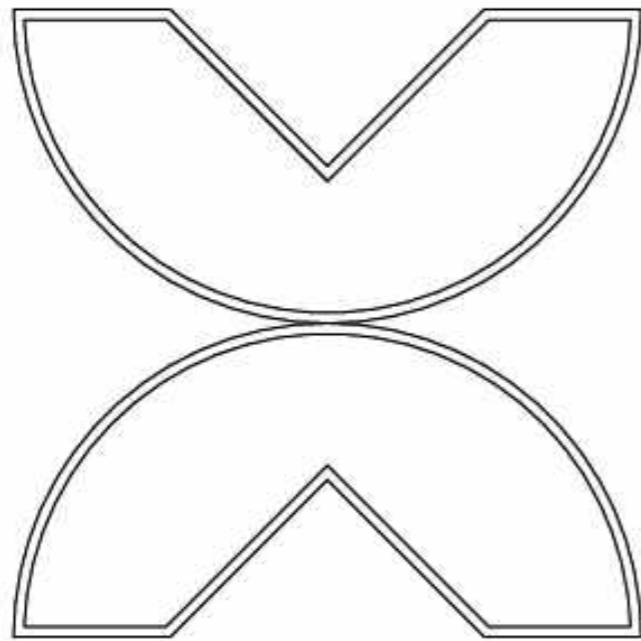
FOLLOW THE CONTEXT – UNDERSTAND THE CHALLENGE OF URBANISATION IN AFRICA



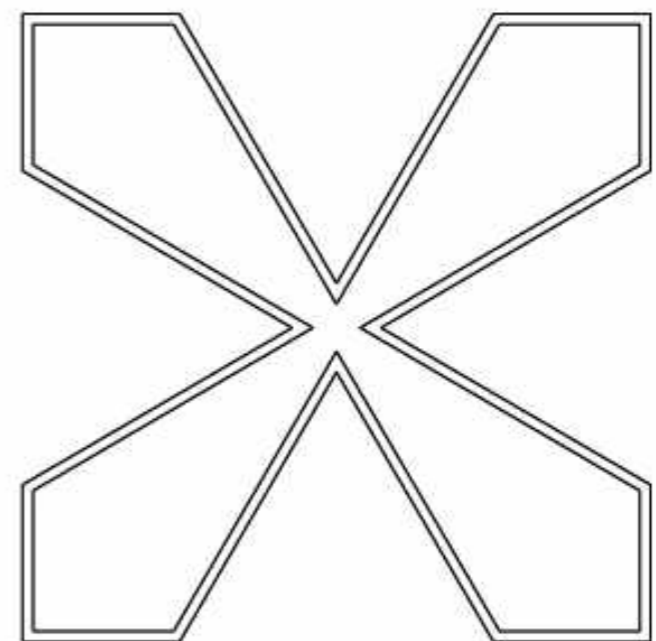
- Experimental Housing Block
- Another Housing Blocks
- Amenities
- Swimming Pool
- Soft landscape
- Out-Site Buildings
- Entrance



BIOCLIMATIC ARCHITECTURE – CONNECTION WITH SURROUNDING

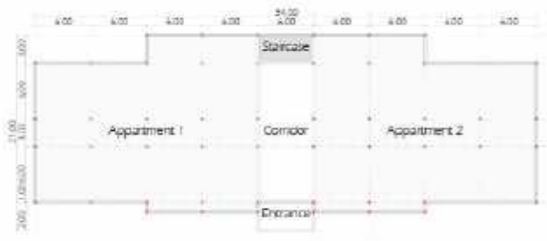


FREEDOM AND EMANCIPATION



PATRONAGE

CULTURAL INFLUENCE – YORUBA TATTOO



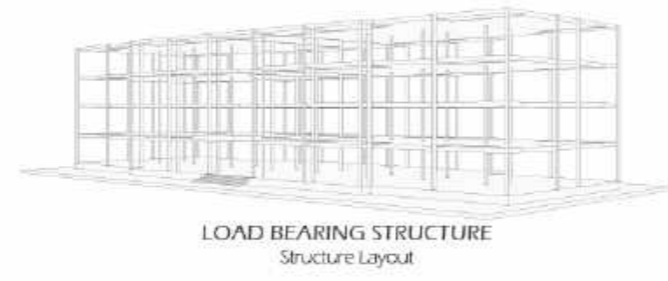
OVERVIEW
Plan + Structure Grid

DESCRIPTION

This is a three storey-building destined to receive one 3 bedrooms and 4 bedrooms apartments per floors.

The new proposal assumes the existing structural system can be load it. And if it don't, It will be reinforced to support the extension.

Each red square represents a column and dashed lines equal to beam system.



PERSPECTIVE
3D Modelling layout

EXISTING BUILDING: ANALYSIS



TYPICAL FLOOR PLAN I //

1 BEDROOM AND 3 BEDROOMS
LEVEL 05 - 10

1 BEDROOM : 12 UNITS / FLOOR (54 SQM/ UNIT)

3 BEDROOMS : 2 UNITS / FLOOR (120 SQM/ UNIT)

● 1 BEDROOM
● 3 BEDROOMS

TRANSFORMATION OF AN EXISTING FLAT ROOF BUILDING INTO A HIGH-RISE DESIGN



TYPICAL FLOOR PLAN II //

2 BEDROOMS TYPE A AND 2 BEDROOMS TYPE B
 LEVEL 13 - 18
 2 BEDROOMS TYPE A: 4 UNITS / FLOOR (108 SQM/ UNIT)
 2 BEDROOMS TYPE B: 4 UNITS / FLOOR (115 SQM/ UNIT)

- 2 BEDROOMS TYPE A
- 2 BEDROOMS TYPE B



TYPICAL FLOOR PLAN III //

4 BEDROOMS
 LEVEL 21 - 26
 4 BEDROOMS TYPE A: 4 UNITS / FLOOR (227 SQM/ UNIT)



TYPICAL FLOOR PLAN IV //

AMENITIES AND SOFT LANDSCAPE
 LEVEL 04, 12, 20

- CHILDREN'S PLAYGROUND : 108 SQM
- NURSERY : 54 SQM
- COMMUNAL AREA : 54 SQM
- GYMNASIUM : 108 SQM
- TECH. FACILITIES : 18 SQM
- LAUNDRY : 18 SQM



TYPICAL FLOOR PLAN V //

RESTAURANT, GARDEN AND SOFT LANDSCAPE
 LEVEL 27

- RESTAURANT : 180 SQM
- SOFT LANDSCAPE : 432 SQM
- GARDEN : 162 SQM
- TECH. FACILITIES : 54 SQM

PROPOSAL OF HOUSING TYPOLOGY – INTRODUCTION OF SKY GARDENS & FACILITIES

ENERGY

- Photovoltaic Solar Panels Field
- Natural ventilation
- Natural Lighting
- Domotic control of HVAC System
- Water management & Treatment
- Control Lighting System
- Led Lighting With Motion Sensor

MATERIALS

- Certified LVL Wood
- Simple Low-E Glazing with UV and IR Filter (Gradient Frit Used)

GREENERY

- Sky Garden
- Open Green Spaces
- Interior Micro Climate

SOCIAL INTERACTION

- Panoramic views
- Sky Garden
- 360° Restaurant
- Hobbies & Leisures
- Restaurant
- Wellness Lobby
- Indoor Chemical and Pollutant Control System

WASTE

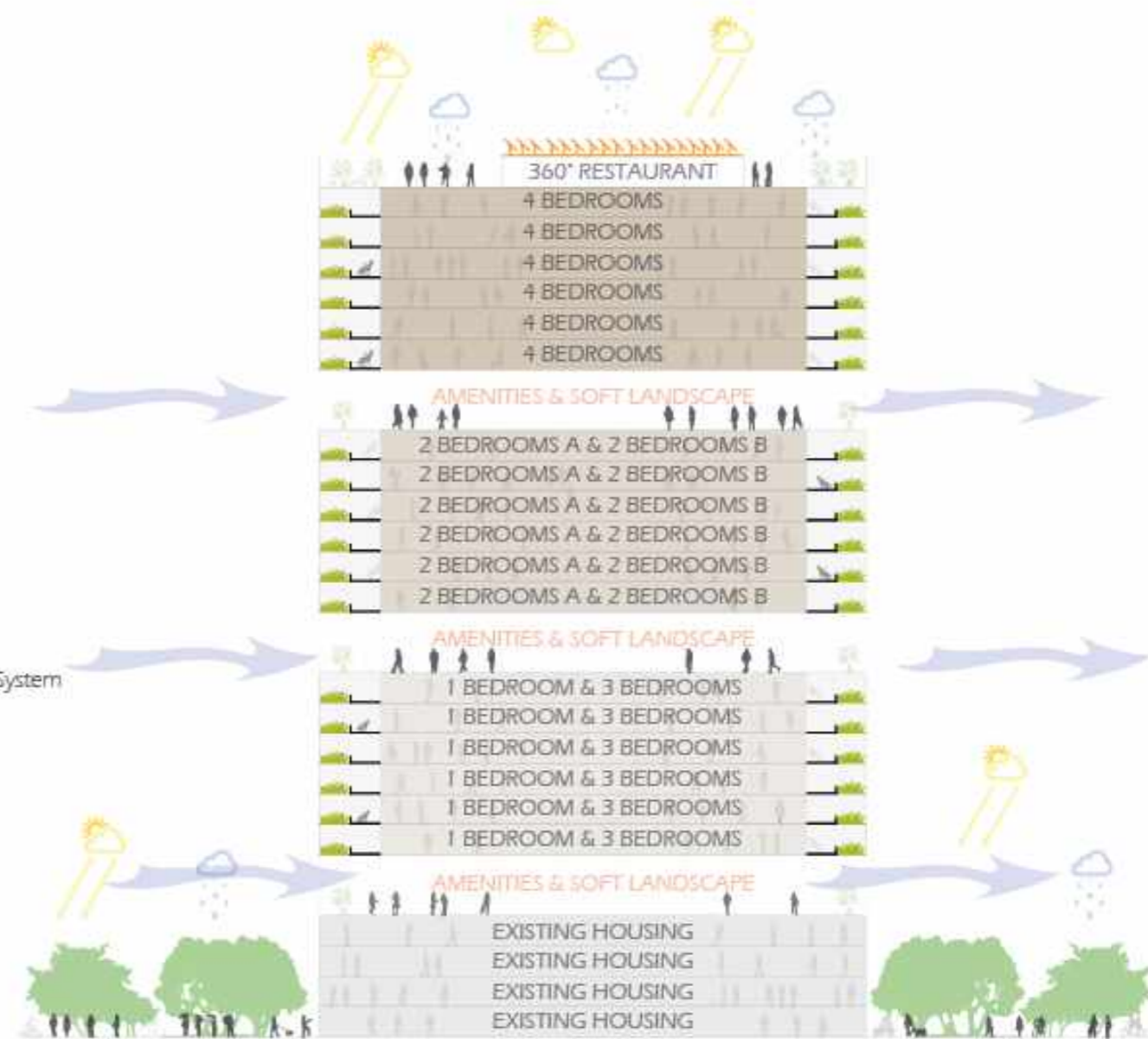
- Garbage Chute
- Reduction of Construction Waste
- Incorporation of recycled contents

WATER EFFICIENCY

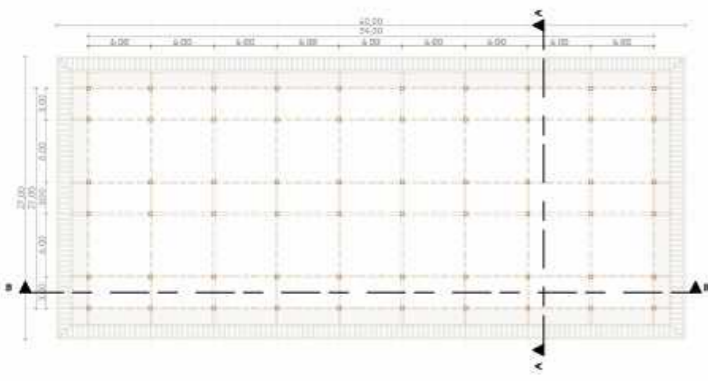
- Collecting of rainwater
- Collecting of Stormwater
- Stormwater Reuse to Watering
- Water Efficiency Labelling and Standards (WELS)

SECURITY

- Video Security
- Escape Stairs
- Pictogram



SUSTAINABILITY DIAGRAM



STRUCTURE LAYOUT
Assembling system of wooden structure; beams and columns

PROGRAM

The new building is a twenty-two storey-building, it can receive mixed-used program. This consists of 1 bedroom, 2 bedrooms, 3 bedrooms and 4 bedrooms apartments.

This project counts five typical floor: there are three for housing, one for amenities and one other for the top roof.

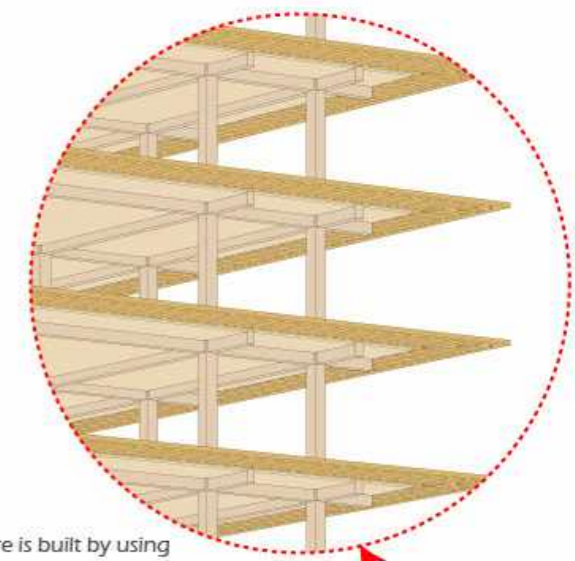
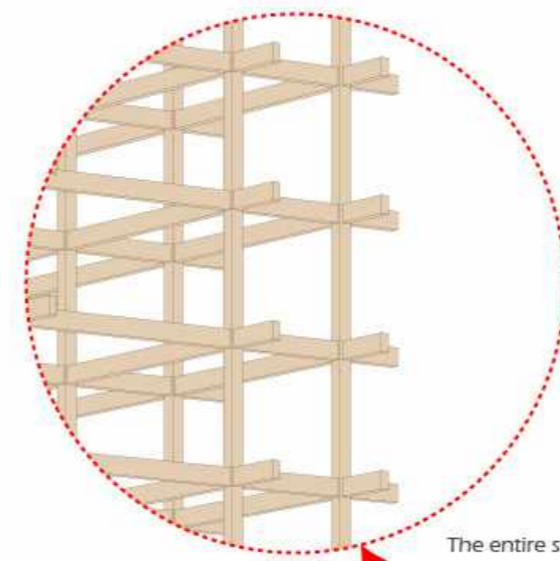
Amenities are provided to help users and enhanced social gathering while also created a secure environment.

NEW BUILDING: ANALYSIS



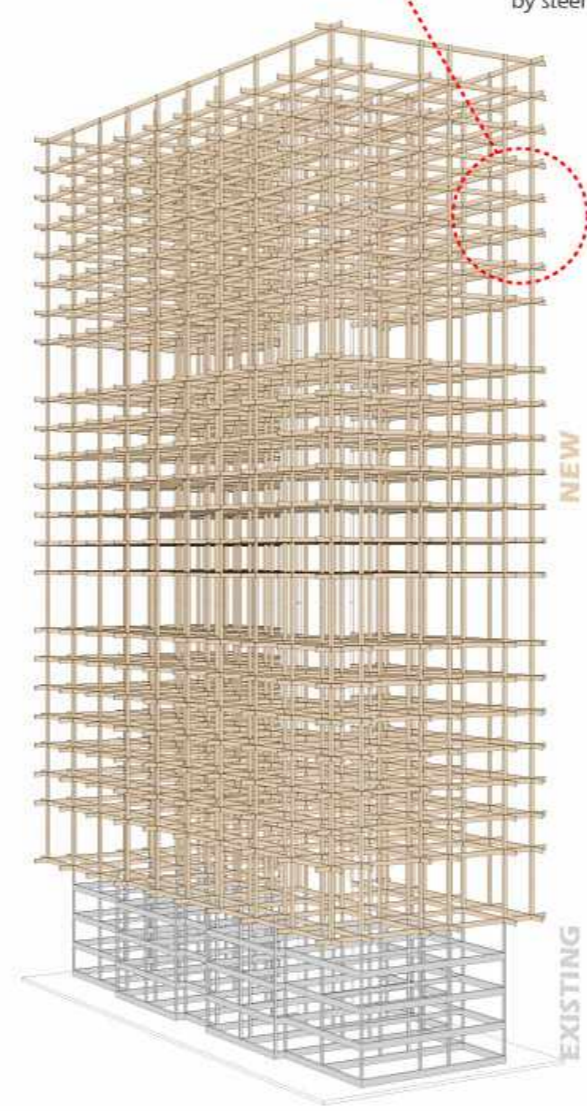
SECTION AA

SECTION BB

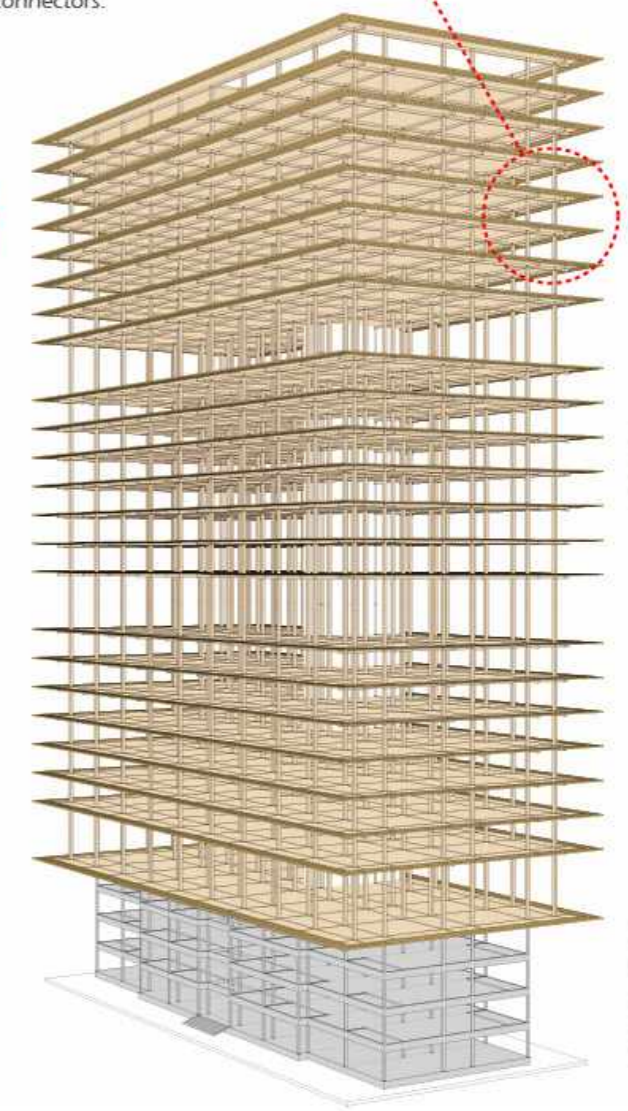


The entire structure is built by using resistance of LVL wood system

Connection between each piece is made by steel connectors.



BEAMS + COLUMNS



BEAMS + COLUMNS + FLOORS

STRUCTURAL DIAGRAM



TALK ABOUT NEW AESTHETIC ON THE CITY